

CSCA Region
9 County Region
Geography: County

Prepared by Esri

Summary	Census 2010	2015	2020
Population	922,936	959,859	1,000,098
Households	355,010	371,949	388,735
Families	233,950	242,800	252,289
Average Household Size	2.48	2.47	2.46
Owner Occupied Housing Units	243,587	245,775	256,568
Renter Occupied Housing Units	111,423	126,174	132,167
Median Age	36.2	37.2	38.0

Trends: 2015 - 2020 Annual Rate	Area	State	National
Population	0.82%	0.00%	0.75%
Households	0.89%	0.00%	0.77%
Families	0.77%	0.00%	0.69%
Owner HHs	0.86%	0.00%	0.70%
Median Household Income	2.41%	0.00%	2.66%

Households by Income	2015		2020	
	Number	Percent	Number	Percent
<\$15,000	54,789	14.7%	52,559	13.5%
\$15,000 - \$24,999	41,882	11.3%	32,588	8.4%
\$25,000 - \$34,999	41,330	11.1%	35,648	9.2%
\$35,000 - \$49,999	54,114	14.5%	56,331	14.5%
\$50,000 - \$74,999	69,521	18.7%	79,140	20.4%
\$75,000 - \$99,999	44,498	12.0%	53,315	13.7%
\$100,000 - \$149,999	41,251	11.1%	48,988	12.6%
\$150,000 - \$199,999	13,638	3.7%	17,522	4.5%
\$200,000+	10,910	2.9%	12,628	3.2%

Median Household Income	\$47,772	\$53,815
Average Household Income	\$64,002	\$71,708
Per Capita Income	\$25,182	\$28,245

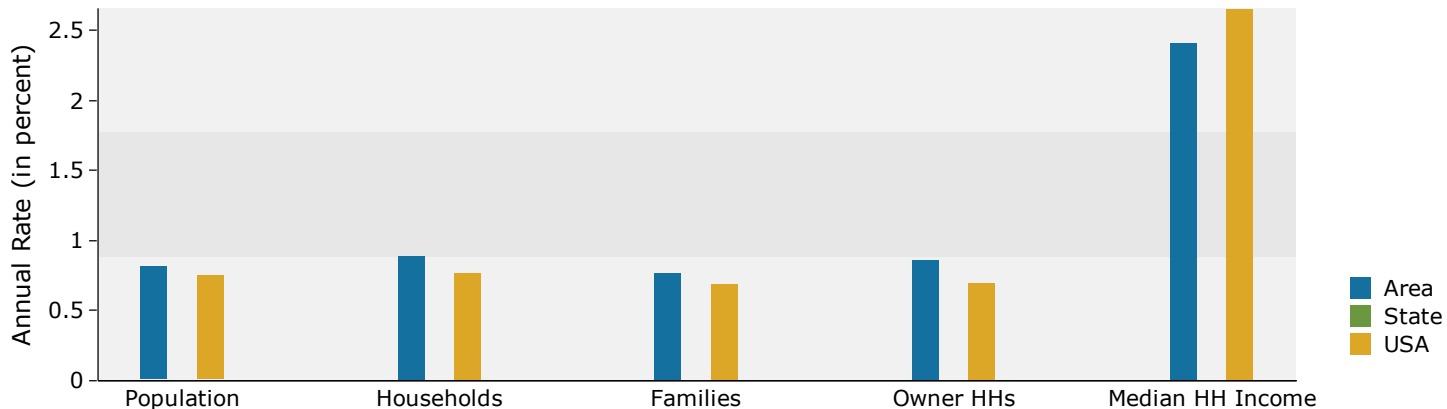
Population by Age	Census 2010		2015		2020	
	Number	Percent	Number	Percent	Number	Percent
0 - 4	59,455	6.4%	58,394	6.1%	59,432	5.9%
5 - 9	58,663	6.4%	59,801	6.2%	59,485	5.9%
10 - 14	59,167	6.4%	59,067	6.2%	63,124	6.3%
15 - 19	70,887	7.7%	66,828	7.0%	69,490	6.9%
20 - 24	75,826	8.2%	79,376	8.3%	74,644	7.5%
25 - 34	122,724	13.3%	131,032	13.7%	134,847	13.5%
35 - 44	118,926	12.9%	118,193	12.3%	125,612	12.6%
45 - 54	132,149	14.3%	126,651	13.2%	120,147	12.0%
55 - 64	112,646	12.2%	124,463	13.0%	129,949	13.0%
65 - 74	65,141	7.1%	84,801	8.8%	101,294	10.1%
75 - 84	34,277	3.7%	36,988	3.9%	46,365	4.6%
85+	13,075	1.4%	14,265	1.5%	15,709	1.6%

Race and Ethnicity	Census 2010		2015		2020	
	Number	Percent	Number	Percent	Number	Percent
White Alone	527,876	57.2%	543,235	56.6%	558,084	55.8%
Black Alone	341,622	37.0%	353,986	36.9%	368,555	36.9%
American Indian Alone	3,380	0.4%	3,529	0.4%	3,713	0.4%
Asian Alone	13,799	1.5%	17,235	1.8%	21,222	2.1%
Pacific Islander Alone	654	0.1%	716	0.1%	797	0.1%
Some Other Race Alone	18,973	2.1%	21,374	2.2%	24,046	2.4%
Two or More Races	16,632	1.8%	19,784	2.1%	23,681	2.4%
Hispanic Origin (Any Race)	41,733	4.5%	47,453	4.9%	53,991	5.4%

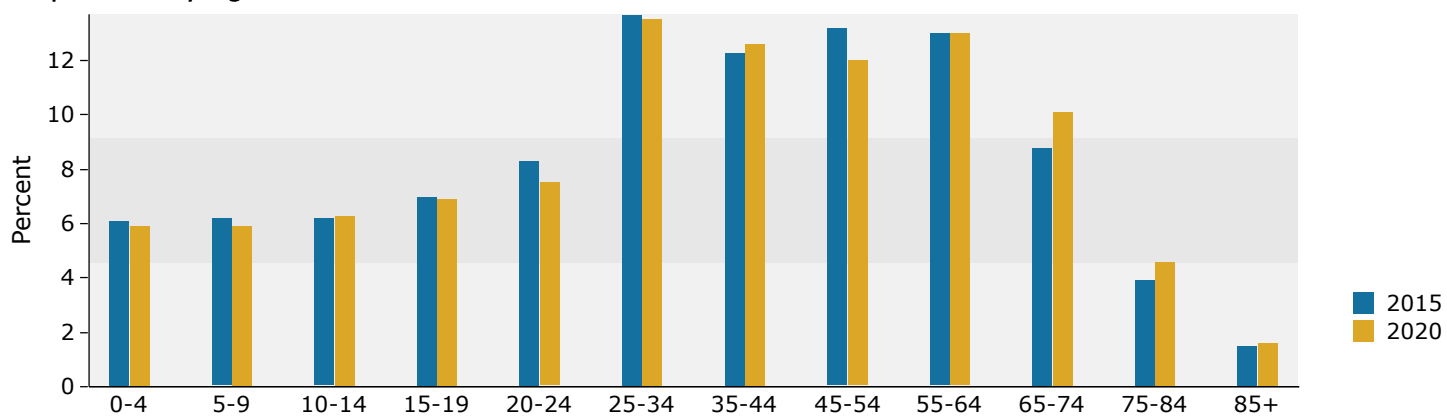
Data Note: Income is expressed in current dollars.

Source: U.S. Census Bureau, Census 2010 Summary File 1. Esri forecasts for 2015 and 2020.

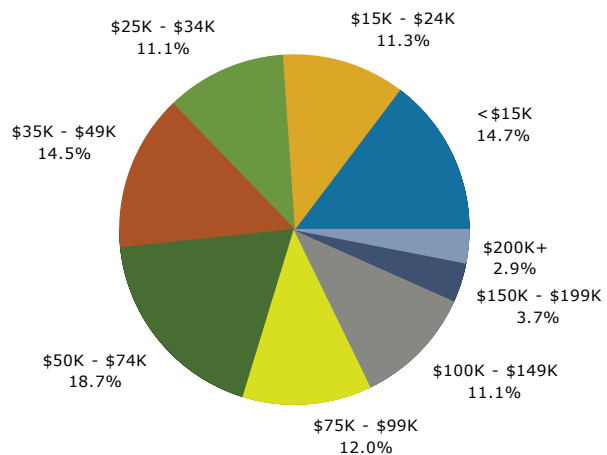
Trends 2015-2020



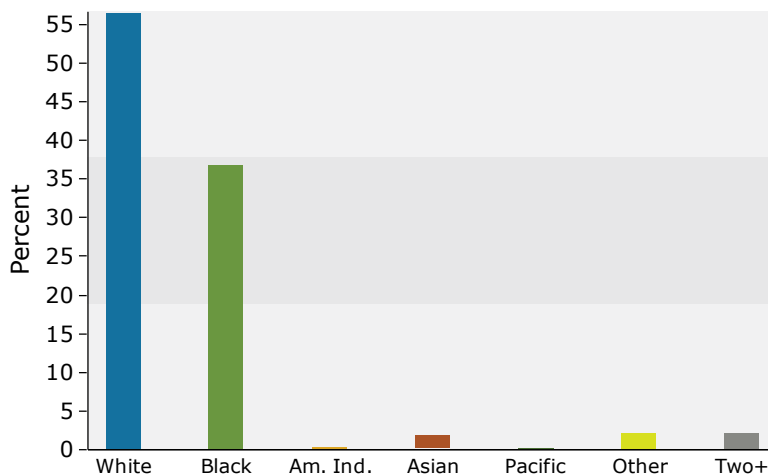
Population by Age



2015 Household Income



2015 Population by Race



2015 Percent Hispanic Origin: 4.9%

Source: U.S. Census Bureau, Census 2010 Summary File 1. Esri forecasts for 2015 and 2020.