

# At A Glance:

# ORANGEBURG COUNTY



Formed in 1769 and named after William IV, Prince of Orange, the son-in-law of King George II. Orangeburg County is the second largest South Carolina county by area, and has the second most highway miles. The county is business ready, with industrial buildings to accommodate businesses with space needs ranging from 30,000 to 230,500 available square feet. Additionally, the county is home to 20 industrial sites throughout its 1,106 square miles of business friendly soil.

## INFRASTRUCTURE

The Central SC Region is home to four major interstates, all easily accessible throughout the region: I-20, I-26, I-77, I-95. These interstates make for smooth travel when commuting to the region's major airport and the state's major port.



Located within the county and boast 11 interchanges providing access to more than half a dozen highways.



25 miles  
N



41 miles  
W



Orangeburg Municipal Airport (OGB): located within the county and has two paved runways (4,500 ft. | 5,400 ft.); Columbia Metropolitan Airport (CAE): 42 miles from the County, it features a UPS air hub and Foreign Trade Zone 127.



Port of Charleston: less than 60 minute drive; nationally recognized as one of the most efficient and effective ports. Deepening to 52' underway to accommodate larger post-Panamax ships.



Rail system served by Norfolk Southern and CSX.

## COUNTY POPULATION

### US Census & Forecasting

92,501

2010  
Census

90,343

2020  
Estimate

89,122

2025  
Forecast

60 Minute Drive Time Estimate (2020): 920,672

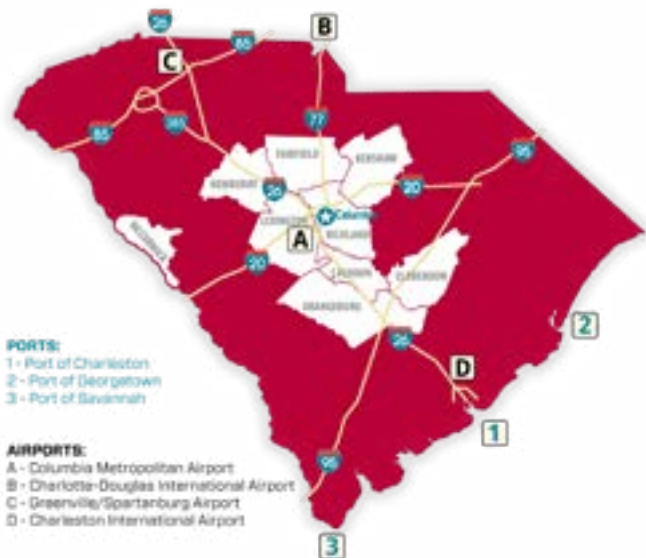
2020 Estimate Age 15+: 82%

2020 Estimate Age 18+: 78.7%

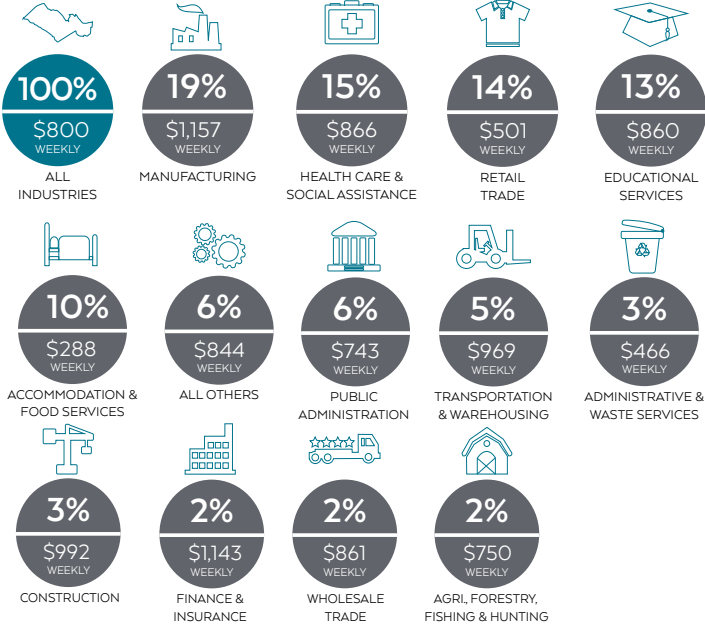
Age 25+ with Bachelor's Degree or Higher: 28.6%

Source: US Census Bureau,

Census 2010 Summary File 1. Esri forecasts for 2020 and 2025.



# EXISTING INDUSTRY

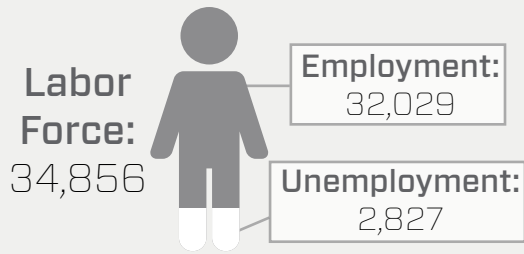


# TOP PRIVATE EMPLOYERS

COMPANY	EMPLOYEES
Husqvarna	2,000
Koyo Corporation of USA	580
Zeus Industrial Products Inc.	529
Food Lion Distribution Center	520
Allied Air Enterprise Inc.	400
SI Group	322
GKN Aerospace	300
The Okonite Company	250
Bimbo Bakeries USA	250
Koppers Utility & Industrial Products	208
North American Container Corp.	200

Source: Central SC records and Reference USA

## EMPLOYMENT February 2021



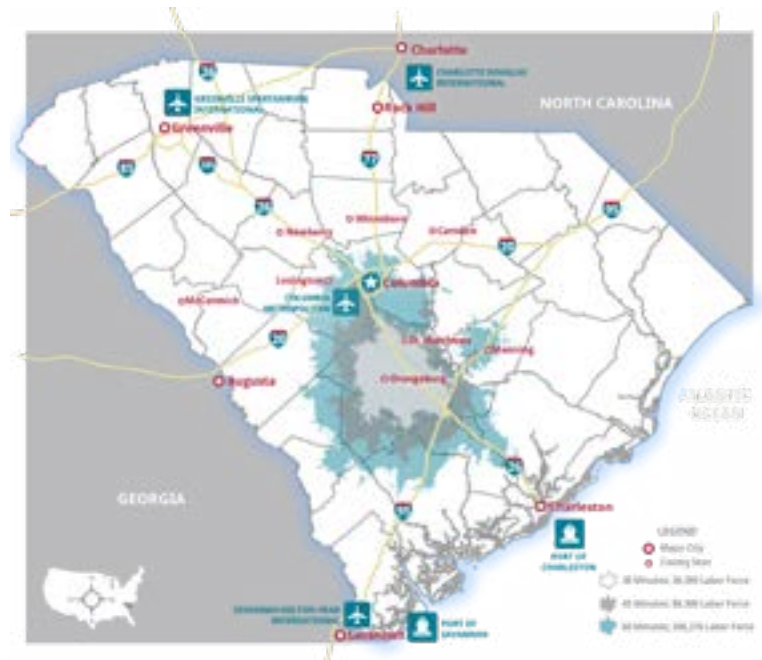
Unemployment Rate: 8.1%  
Per Capita Income: \$33,818

### Annually

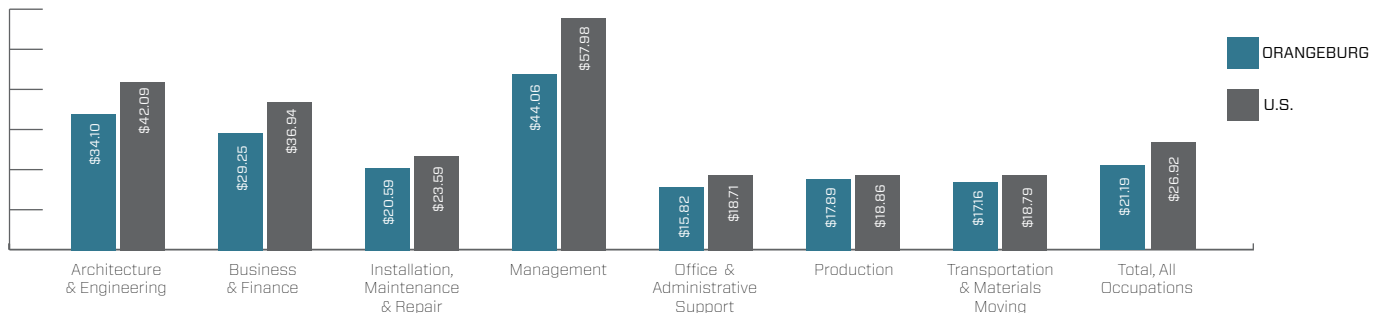
4.8%	5.8%	7.2%
2019	2018	2017

Source: US Bureau of Labor Statistics

## DRIVE TIME LABOR FORCE



## WAGES COMPARISON Select Occupations: Hourly Rates



Source: EMSI, Occupation Table 2019-2020, Average Hourly Earnings